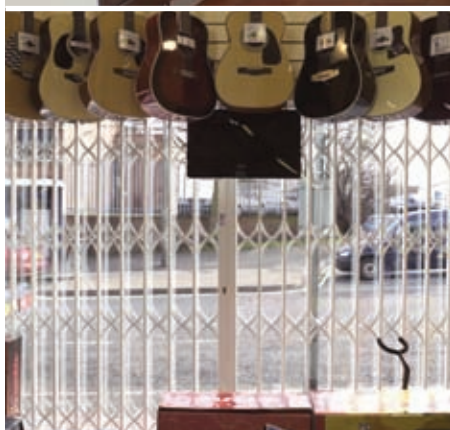




Seriously Strong Security

CX2





The market leading CX2 is a certified retractable security grille for protection of windows and doors in domestic and commercial properties. Independantly attack tested, CX2 is the first choice when an insurance rated grille is required. Providing peace of mind against burglary and intruders at home or work, fitting the CX2 may also reduce insurance premiums.

- **Patented Crosslinx® Rivetless System** for added strength provides a much stronger and more attractive alternative to rivets.
- **Made to measure** to meet individual customer requirements.
- **Discreetly stacks back** to a fraction of the overall size.
- **Ease of access** – a low profile bottom track allows ease of access to wheelchairs and pushchairs.
- **Secure and easy to close** patented multi-point slam shut lock ensures outstanding protection and ease of use. A number of grilles can also be operated from a single key.
- **Anti-jemmy security strip** protecting the lock from attack with a crowbar or other lever.
- **Strong durable finish in a wide choice of colours** to blend in with any colour scheme.
- **Exceptionally low maintenance** with a zinc plated anti-rust finish and no electrics to go wrong. Costly service and maintenance contracts are not necessary.
- **24-month manufacturers warranty** – in the unlikely event of a quality problem, Bradbury Security provide a 24-month manufacturers warranty (providing the grille is fitted in accordance with minimum fixing standards).
- **Planning permission** is not usually required.

Product Information

- Attractive curved lattice
- Unique 'top hung' design fixed on all 4 sides
- Available as a single grille (locking to one side) or double grille (central lockpost)
- For maximum accessibility in doorways – lift up and life out bottom track options are available as well as a swivel return to hinge back the stack of the grille when open.

Certification

CX2 has been independantly tested by the Loss Prevention Certification Board (LPCB) to the industry standard of LPS 1175 Security Rating 1 (within the certified size range) and is a Secured by Design 'Police Preferred Specification'. Certified grilles are authenticated with a plaque on the lockpost.

Bradbury Security

CX2 is part of the Bradbury Security's market leading CX Range of Retractable Security Grilles. Other Bradbury Security Products include Steel Doors, Optiguard Anti-Vandal Screens, Safes and Cages.



Your Local Distributor & Installer
24HourGlass

260 High Street, Langley, Slough, Berkshire SL3 8HA
www.24hourglass.co.uk

Enquiries

01753 541 648
01753 582 877
0800 731 58 29



QUALITY SYSTEMS CERTIFICATE NO. 312
ASSESSED TO ISO9001:2000